



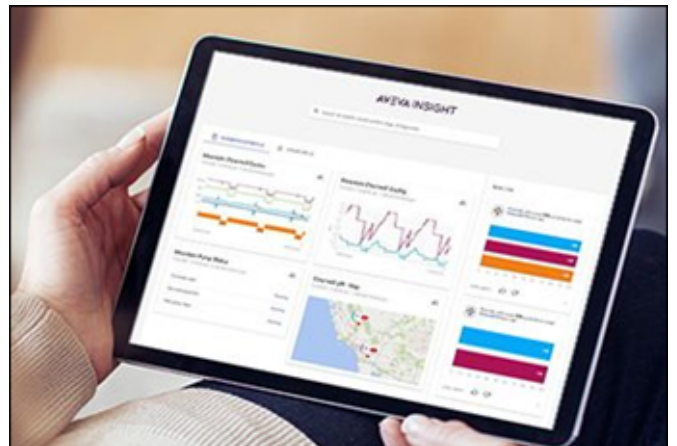
# REMOTE ACCESS

Simple Solutions

## Problem Statement & Definitions

Remote access enables operators, engineers, or authorized personnel to monitor, configure, troubleshoot, and control automation systems and processes from anywhere with a Network connection.

With remote access, individuals can view real-time data, receive notifications or alerts, adjust settings, perform diagnostics, and execute commands remotely. It enhances operational efficiency, reduces downtime, enables faster response times to issue, and facilitates remote collaboration and support.



## Remote Access to Historical/Live Data (Read Only)

### Historian Client Web

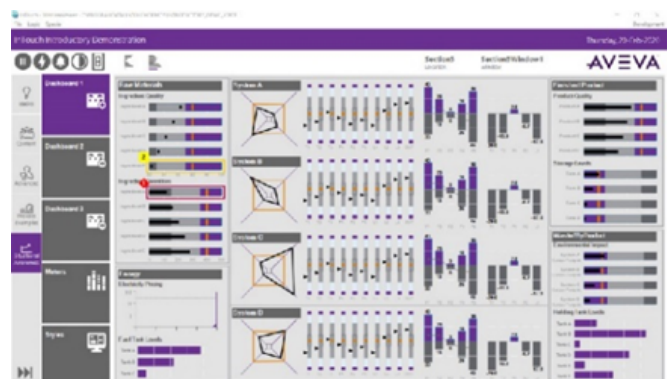
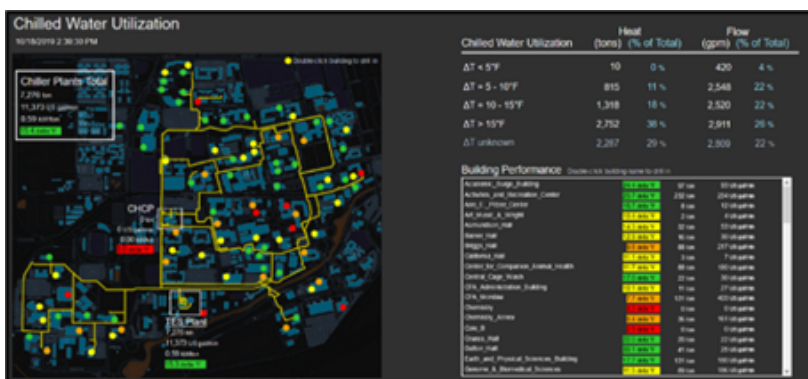
- Uses the same network as the AVEVA Historian.
- Web-based access - HTML5.
- Historian data retrieval and visualization - charting and trending.
- Tag search and filtering - ad hoc expressions and automatic unit conversion.
- Responsive layout, allowing to adapt to different screen sizes and devices.

### AVEVA Insight

- Real-time data collection and aggregated data from multiple sources.
- Cloud based architecture.
- Predictive Analytics and Asset Performance Management.
- Data visualization and alert notification on web portal, mobile app and email.
- Out-of-the-box charts, grids and displays.

### PI Vision

- Uses the same domain as the PI Data Archive.
- Data access to the PI System and integration with the PI Event Frames feature.
- Content development and monitoring is all web based.
- User-friendly display creation: drag-and-drop interface with interactive visualizations.
- Leverages template-based asset hierarchies.
- Calculations, expressions, and scripting to perform advanced analytics on the data.
- APIs and integration capabilities to connect with external.



## Remote access to SCADA Interface (Read/Write)

### InTouch Access Anywhere

- Allows to reuse the existing HMI screens - gives full access to the application on a web browser.
- Web-based Interface: Eliminating the need to install software on remote devices.
- Cross-platform compatibility: compatible with different OSs, including Windows, macOS, and various mobile platforms.
- Supports real-time alarms and notifications.
- Secure connectivity: securely access the InTouch application with accordance to NIST and NERC-CIP standards.
- Allows access to multiple InTouch applications.

### OMI (Operations Management Interface) & InTouch Web Clients

- Accessible from any HTML5 browser within the network, doesn't require RDS or IIS.
- Supervisory/management visualization.
- Access to dashboards/KPI visualization.
- Leverages web friendly widgets to extend HMI features.

### AVEVA Edge

- Allows to reuse the existing HMI screens - gives full access to the application on a web client.
- Portable: Access information from PCs, tablets, smart phones, and wearable devices.
- Flexible: Consume information from web browsers or dedicated apps.
- Customizable: Custom user interface for each persona, based on their roles.
- Scalable: Auto screen scaling for different screen sizes and orientations.



[View the Cybersecurity White Paper](#)